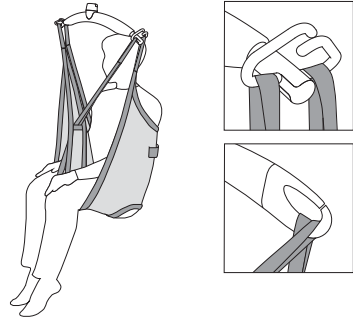
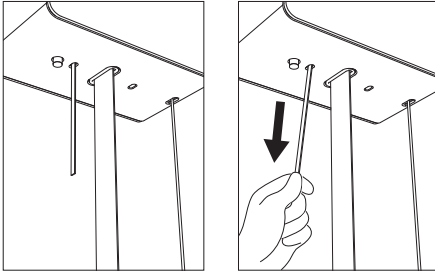


## Quick Guide – GH3

- The ceiling hoist is switched on by pressing one of the buttons on the hand control unit. The green light will indicate that the hoist is ready for use.
- If the indicator light shows yellow after 15 seconds, this means that the hoist power supply is not connected.
- If the indicator lamp is yellow and the hoist is beeping when activated, there is a fault on the hoist.
- If the hoist does not switch on, this may be because the emergency stop has been activated.
- The hoist does not need to be turned off – it switches off automatically after approximately two minutes without activation.
- The hoist recharges when it is in the rail system or when the hand control unit is placed in the charging station – irrespective of hoist model. Recharging will always take place irrespective of the height of the lifting hanger.
- The hoist's lifting capacity is marked on the hoist, e.g., 200 kg. Note that the rail system or the sling may have a lower lifting capacity. The lowest lifting capacity must not be exceeded.
- If you have any questions regarding instructions and training, ask your environmental health & safety coordinator, human resources manager or your line manager.



## Safety functions

### Emergency stop

- One pull on the red strap. Use only in emergencies, when there is an immediate need to stop the hoist.
- When the emergency stop is activated, only the hoist's emergency lowering device will function.
- Deactivate the emergency stop by pressing the "stop" button (yellow button) on the hoist. Then press one of the buttons on the hand control unit twice.

### Emergency lowering device

This is activated by a prolonged pull on the red strap. Use only in an emergency. This function allows the patient to be lowered when the hoist has failed to work.



**Scan here for user manual, etc. concerning use of the GH3.**

## Accessories

### Lifting hanger

Place the sling straps in the hooks. Check that the straps have been correctly attached to the hanger.

### Lifting sling

We recommend using a lifting sling with two or four loop attachments for attaching the sling to the lifting hanger. The sling must always correspond with the hoist's lifting capacity. Always use individually marked CE products. In case of doubt concerning the use of a lifting sling, please contact your supplier.

## Daily cleaning and maintenance

Clean with a damp cloth and ordinary detergent. Do not use strong acids, bases or alcohol when cleaning. See user manual.

| Time to care |

### V. Guldmann A/S

Graham Bells Vej 21-23A, DK-8200 Aarhus N  
Tel. +45 8741 3100, Fax +45 8741 3131  
info@guldmann.com  
www.guldmann.com